

# Body Design

## PRODUCT ENGINEERING DESIGN

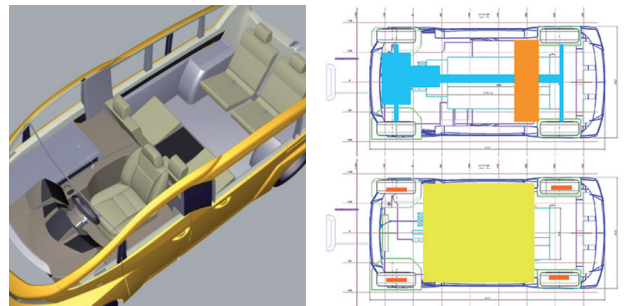
### STYLING AND SURFACING

- Research and benchmarking
- Creation of concept sketches
- Selection and development of styling concepts
- Style development and 3D visualization
- Class-A surfacing modelling
- Virtual reality visualization



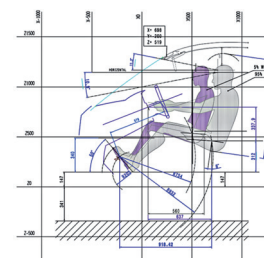
### EXTERIOR AND INTERIOR PACKAGING

- Legal requirements
- Customer specific requirements
- Ergonomic requirements
- Passenger access
- Load access
- Maintenance access
- Passenger Vehicles
- Commercial Vehicles
- Off-Road vehicles
- HEV / EV



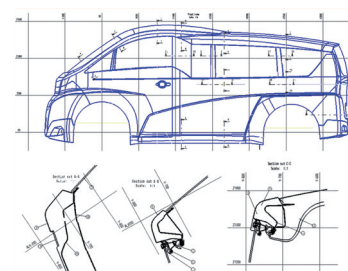
### STYLING FEASIBILITY

- International regulations
- OEM internal regulations
- Ergonomic considerations
- EuroNCAP considerations



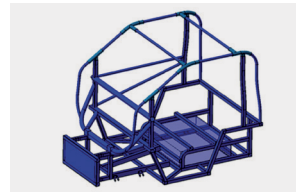
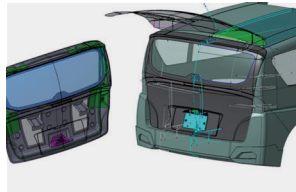
### TECHNICAL FEASIBILITY

- Cross section dimensioning
- Stamping feasibility
- Weld access
- Assembly sequencing
- Material thickness'
- Paint access
- Paint drainage



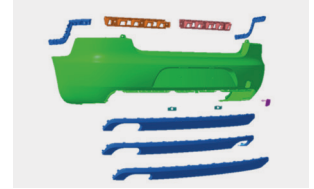
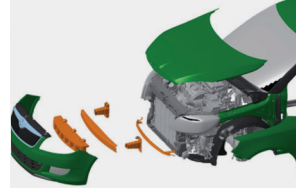
## ENGINEERING DESIGN

- Body in white
- Closures in white and mechanisms



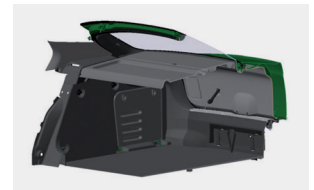
## EXTERIOR TRIM

- Frontend modules
- Front and rear bumper systems



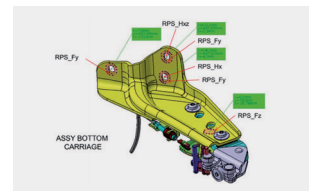
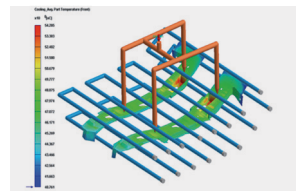
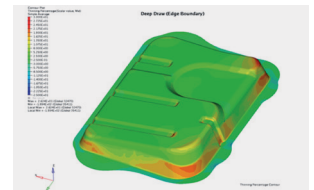
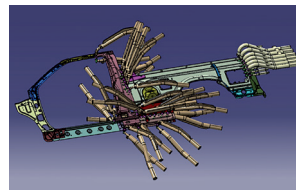
## INTERIOR TRIM

- Cockpit modules
- Door panel trims
- Pillar trims
- Boot trim
- Headliners



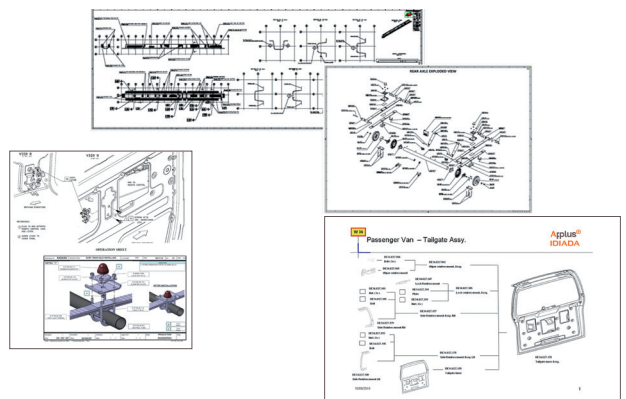
## PROCESS QUALITY CONTROL

- Weld gun access studies
- Mold flow investigations
- Stamping feasibility
- Studies and optimisation of tolerances
- DFMEA



## TECHNICAL DOCUMENTATION & DATA MANAGEMENT

- Bill of materials
- Assembly schemes
- Digital mock-up
- Design change request
- 2D detail and assembly drawings
- Production process assembly sheets



## CONTACT INFORMATION

**Applus IDIADA Brazil** • Av. Senador Vergueiro, 2123, 22º andar • São Bernardo do Campo, SP, Brasil

For further details, please contact: ✉ [idiada\\_brasil@idiada.com](mailto:idiada_brasil@idiada.com) ☎ +55 11 4330 9880



[www.idiada.com](http://www.idiada.com)